

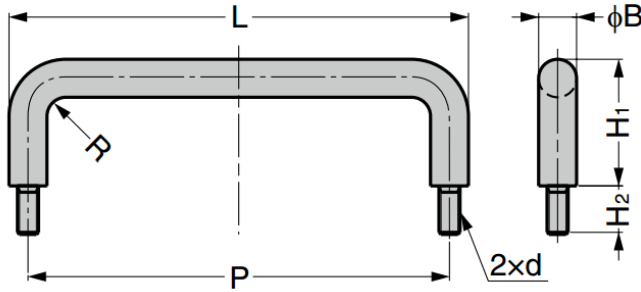
## GH-42-BT Titanium Handle

### Features

- Ideal for places with light weight and rust resistance requirements
- Titanium handle hardly causes metal allergy. In addition, it is non-magnetic, and is suitable for medical devices such as MRI
- Titanium brackets and mounting nuts available
- Stainless steel variant **GH-42-B** also available

### Recommended Screws

- Hexagon nut (back screw mount)



Part No.	Material	Finish	L	H <sub>1</sub>	H <sub>2</sub>	B	P	R	d
GH-42-BT-2	Titanium	Polished	108	30	11	8	100	4.5	M5
GH-42-BT-4			130	40		10	120	5	M6
GH-42-BT-15			162	50	20	12	150	6	M8

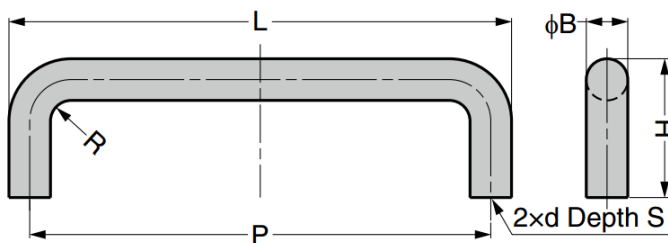
## GH-42-CT Titanium Handle

### Features

- Ideal for places with light weight and rust resistance requirements
- Titanium handle hardly causes metal allergy. In addition, it is non-magnetic, and is suitable for medical devices such as MRI
- Titanium mounting screws available
- Stainless steel variant **GH-42-C** also available

### Recommended Screws

- $d \times$  (door thickness +5 ~ S)



Part No.	Material	Finish	L	H	B	P	R	d	S
GH-42-CT-2	Titanium	Polished	108	30	8	100	4.5	M5	8
GH-42-CT-4			130	40	10	120	5	M6	
GH-42-CT-15			162	50	12	150	6	M8	10